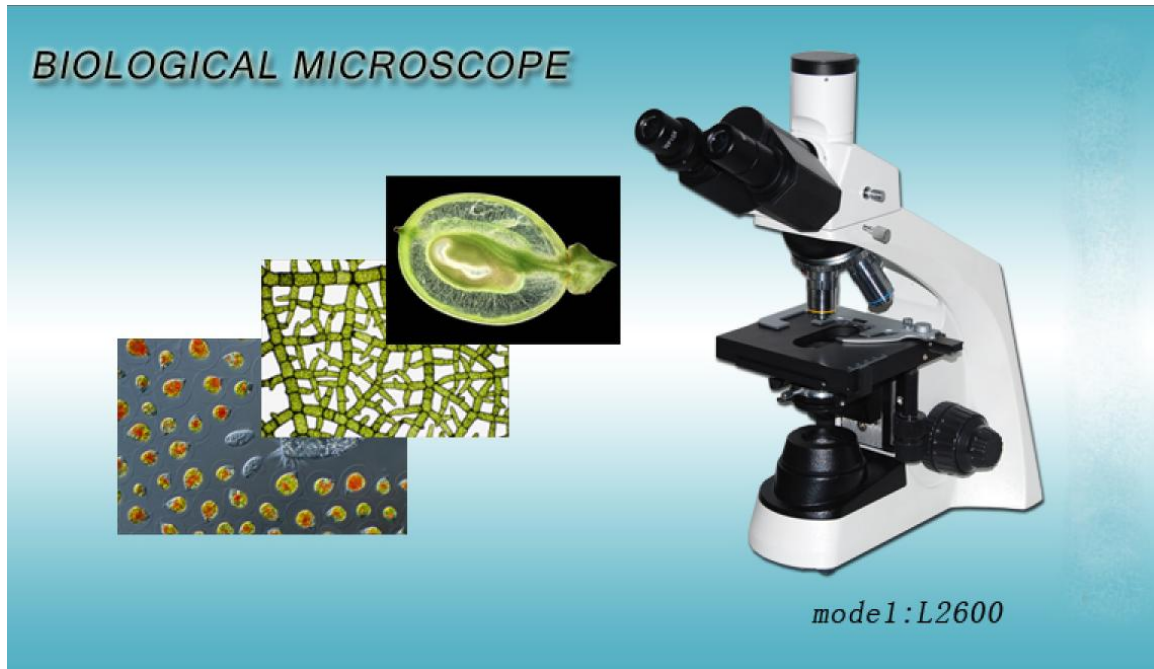


L2600 Biological Microscope



L2600 biological microscope is equipped with eminent optical system, provides excellent optical performance and the update of the system. Because of the streamline figure and pastel color, it has more beautiful appearance. It achieves the notion of ergonomics design, so it can provides the more comfortable operation and operational room. It can be used in the field of the biology, medicine, industry, agriculture, at the same time it is the perfect research instrument for the department of hospital, teaching and academy.



Observation System

Trinocular, single diopter adjustment, inclined 30° and integrated analyzer, it can be connected to the camera.

10X wide field plan eyepiece, field Φ 18mm, can provide expanse and smooth observation space. Another eyepiece is 10X division eyepiece used for proofreading the centre.

Stage:

Double layer mechanical stage , size of 135mmX125mm, move range: 75mmX35mm. Perfectly combine with the coaxial gar and flexible steel wire driving, make the stage more fluent moving .The driving device fix in the stage , which can prevent the device on the outside of stage to hurt the operator effectively.



Transmitted illumination

Collector for 3W LED illumination, brightness adjustable.

Condenser

Abbe condenser, NA. 1.25 Rack & pinion adjustable. dry or oil dark field condenser can be equipped.

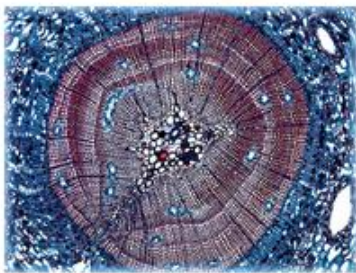


Objective

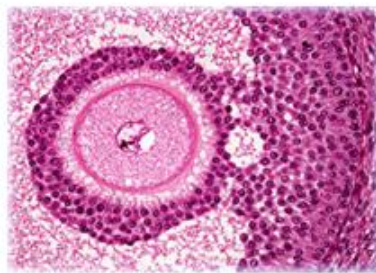
Magnification	N. A	W. D	note
SP4X	0.10	23.13mm	
SP10X	0.25	4.09mm	
SP40X	0.66	0.60mm	spring
SP100X	1.25	0.38mm	spring oil



Digital camera photography:



Bright type observe



Bright type observe



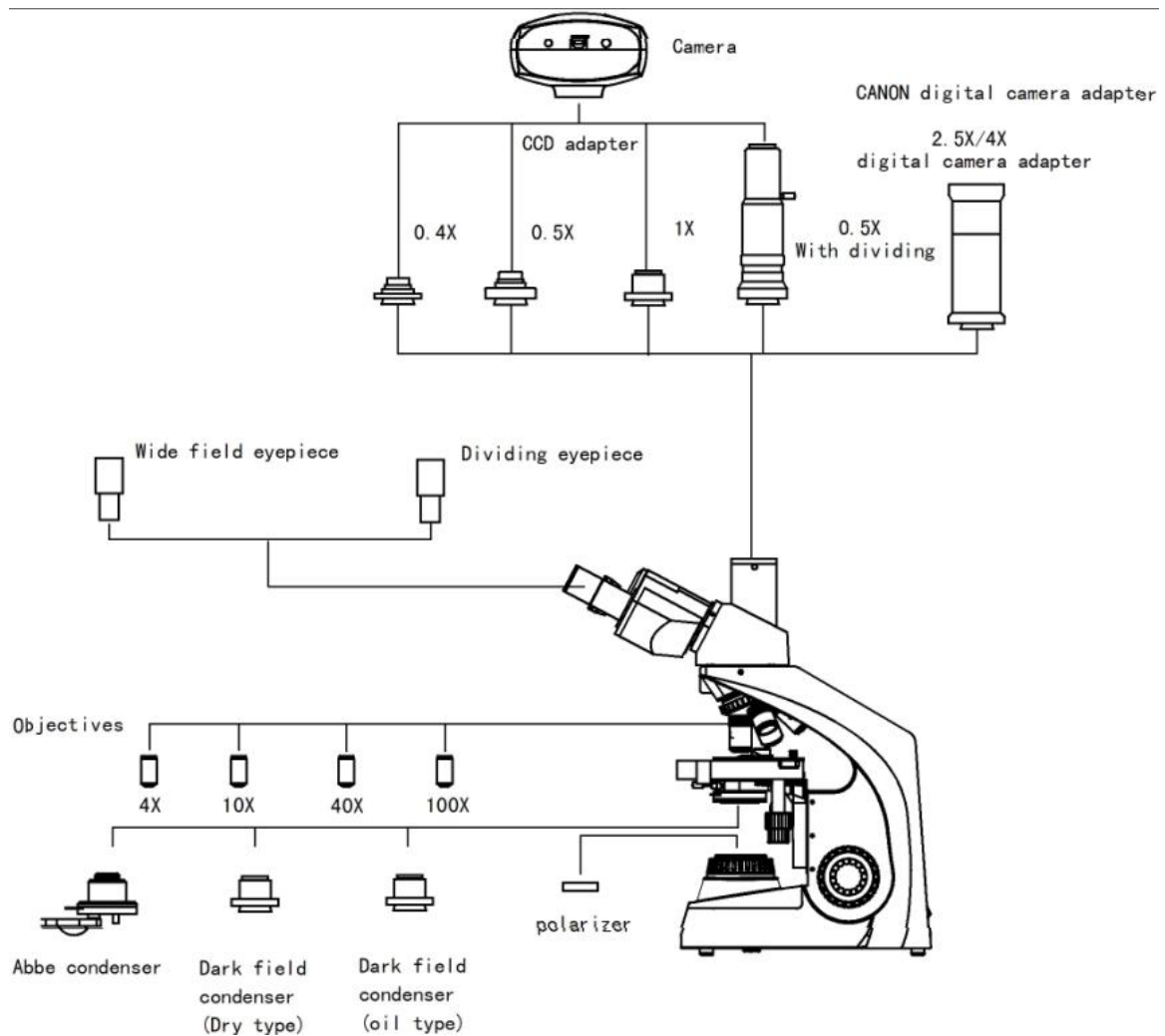
Dark type observe

Specification:

Eyepiece	Wide field WF10X, (field number Φ 18mm)					
Objective	type	magnification	N.A.	Work distance (mm)	Cover glass thick (mm)	note
	Semi-plan achromatic objective (standard)	4X	0.10	23.13	0.17	
		10X	0.25	4.09	0.17	
		40X	0.65	0.60	0.17	
		100X	1.25	0.38	0.17	oil
	Plan achromatic objective (option)	4X	0.10	17.90	0.17	
		5X	0.12	18.30	0.17	
		10X	0.25	8.80	0.17	
		20X	0.40	8.60	0.17	
		25X	0.40	0.65	0.17	
		40X	0.65	0.56	0.17	
		60X	0.85	0.25	0.17	
		100X	1.25	0.33	0.17	oil
	Eyepieces tube	Binocular (inclination 30°), interpupillary distance: 48~75mm. (Trinocular can be choose)				

Focus system	Coaxial coarse/fine focus with tension adjustable and up stop, minimum division of fine focusing: 2.0 μ m., moving range: 0~20mm.
Nosepiece	Quadruple backward ball bearing inner locating
Stage	Double layer mechanical stage (size: 125mmX135mm, moving range: 35mmX75mm)
Condenser system	Abbe condenser, with aperture diaphragm, rack & pinion adjustment. (dark field condenser or phase contrast unit can be choose)
Light source	3W high brightness white LED brightness adjustable. (6V20W halogen lamp can be choose)
Power supply	AC 100~240V (suitable for LED brightness), AC 110V/220V (suitable for 6V20W halogen lamp)

System Diagram



*Items and specification subject to change,
please contact ALLTION for current product information*

MICROSCOPES ARE OUR BUSINESS & SERVICE IS OUR PRIDE

ALLTION
(Wuzhou) Co.,Ltd.

Alltion Building, NO.10, 3RD Road ,Wuzhou Industrial Park, Wuzhou, Guangxi, China 543000

Tel: +86-774-2836101

Fax: +86-774-2836192

E-mail: sales@alltion.com or sales@alltion-microscope.com

Web site: <http://www.alltion.com> or <http://www.alltion-microscope.com>